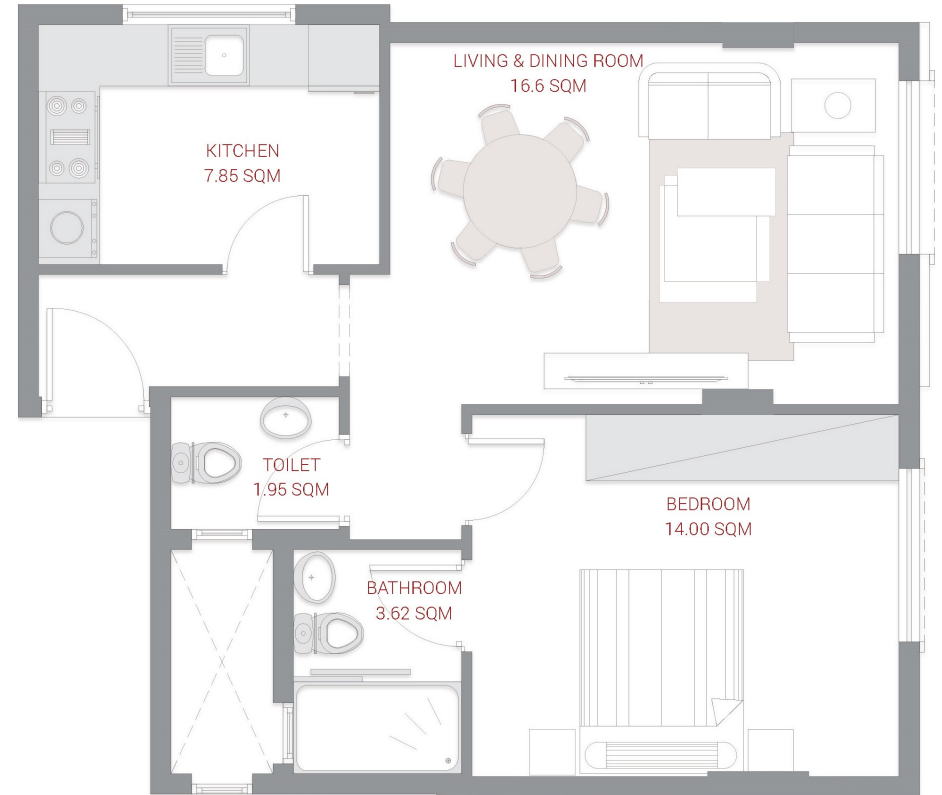
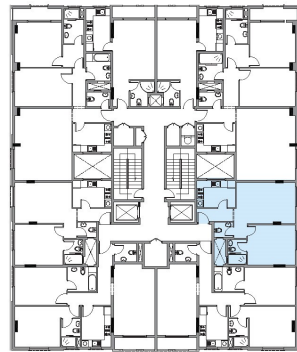
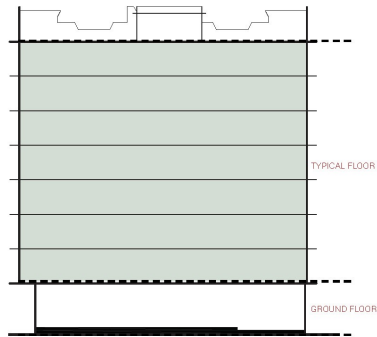


TYPICAL FLOOR

# 1 BEDROOM TYPE 1 B

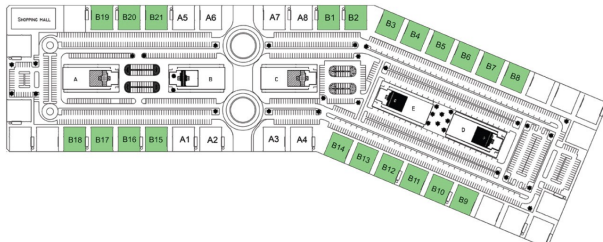
Series no: 05

Gross area 72.85 sqm 788.41 sqft



SHIEKH MAKTOUM BIN RASHID STREET

SHIEKH MOHAMMED BIN ZAYED  
ROAD - E311



AL HAMIDIYA PARK