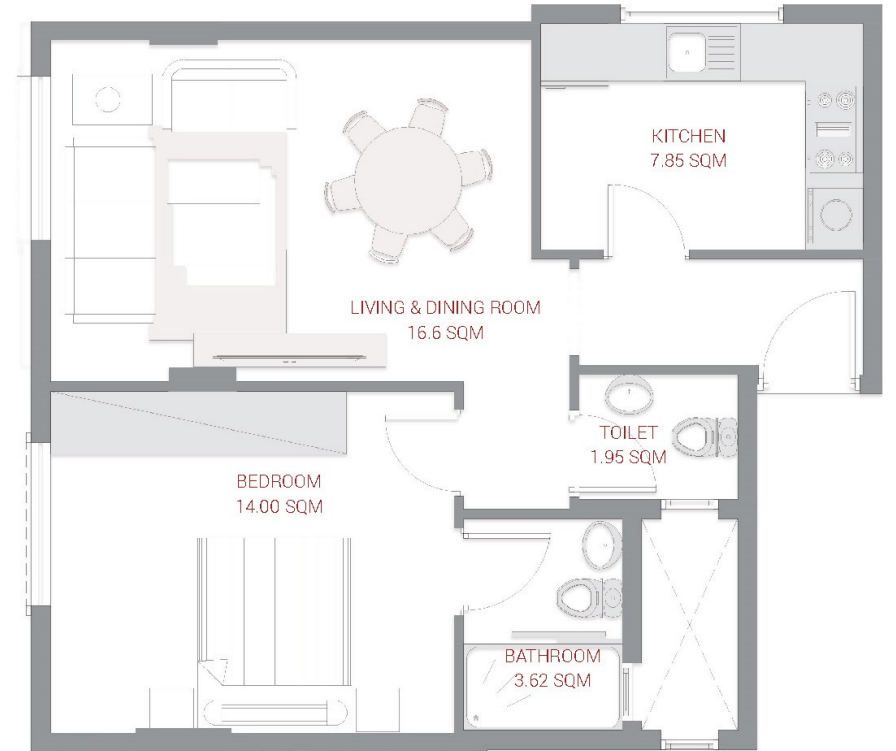
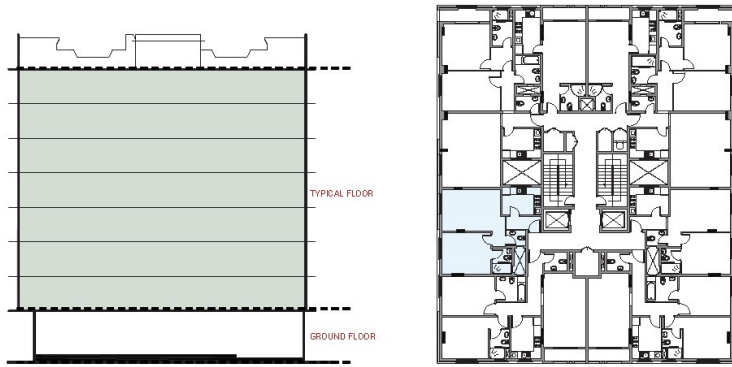


## TYPICAL FLOOR

# 1 BEDROOM TYPE 1 A

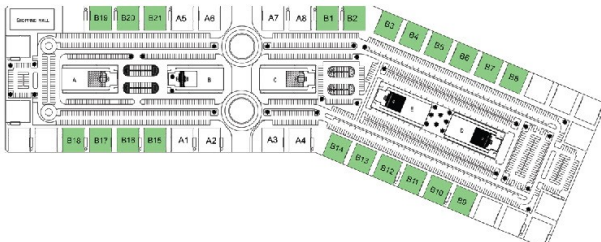
Series no: 08

Gross area 73.25 sqm 784.10 sqft



SHIEIKH MAKTOUM BIN RASHID STREET

SHIEIKH MOHAMMED BIN ZAYED  
ROAD - E311



AL HAMDIYA PARK